

CVS Pharmacy

Roselawn, Indiana

Single Net Tenant Property with National Credit
Tenant - CVS.



Quality and Integrity You Can Build On!

Location:

The Roselawn CVS is located at 5765 East State Road 10 at the heart of Roselawn's shopping district just off Interstate 65.

Availability:

This 7,560 s.f space is fully leased. Lease expires 5/31/2015

Trade Area:

Chicago Michigan City MSA – Rural Newton
County Indiana.

Demographics:	1 Mile	3 Mile	5 Mile
Pop.	1,700	5,218	10,176
Income	\$58,371	\$62,098	\$63,378

Leasing Info:

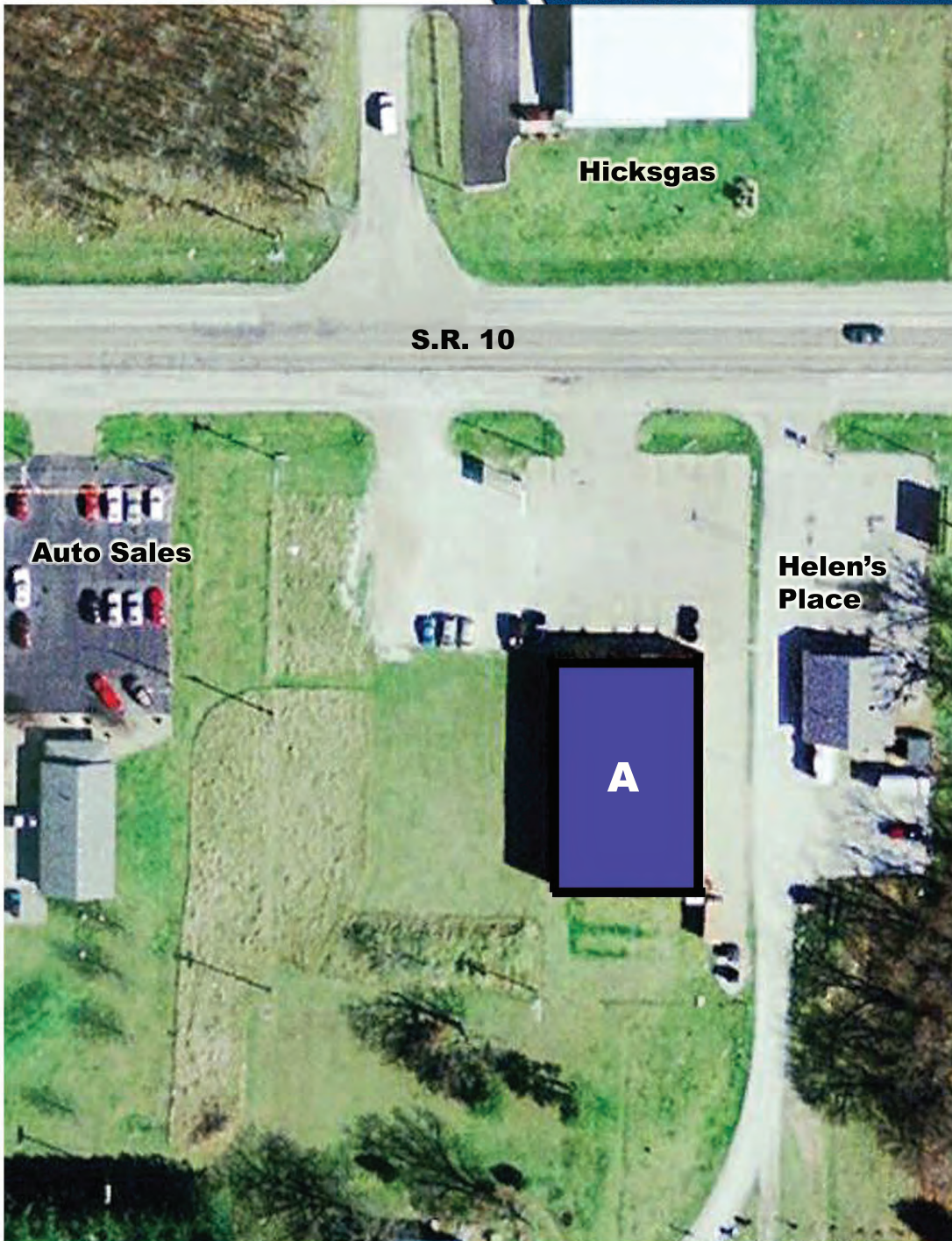
John Fulkerson
Director of Leasing & Development
(219) 956-3111 or (888) 219-5656



CVS PHARMACY - ROSELAWN LEASING PLAN

SQUARE FOOTAGES:

A CVS Pharmacy 7,560 s.f.



For sales or leasing information, contact:
John P. Fulkerson
Director of Leasing & Development
The Hamstra Group, Inc.
Office: 219/956-3111
Cellular: 219/ 863-8023
jfulkerson@hamstragroup.com



www.HamstraGroup.com