

CROWNHURST CENTRE



Quality and Integrity You Can Build On!

OVERVIEW:

* Located on State Road 53 (Broadway) and East 93rd Avenue near Interstate 65 and US 30

* Adjacent to the Ameriplex & Purdue University Research Centers and Tech Business Incubator Project

* Located near many medical facilities including Franciscan Hospital, Crown Point Methodist Hospital of Merrillville, Neuro Behavioral Hospital, Pinnacle Hospital, & Vibra Hospital

* Location is an already established and growing commercial development area.



Franciscan Medical Clinic



Crownhurst Professional Building



Day Spa Building



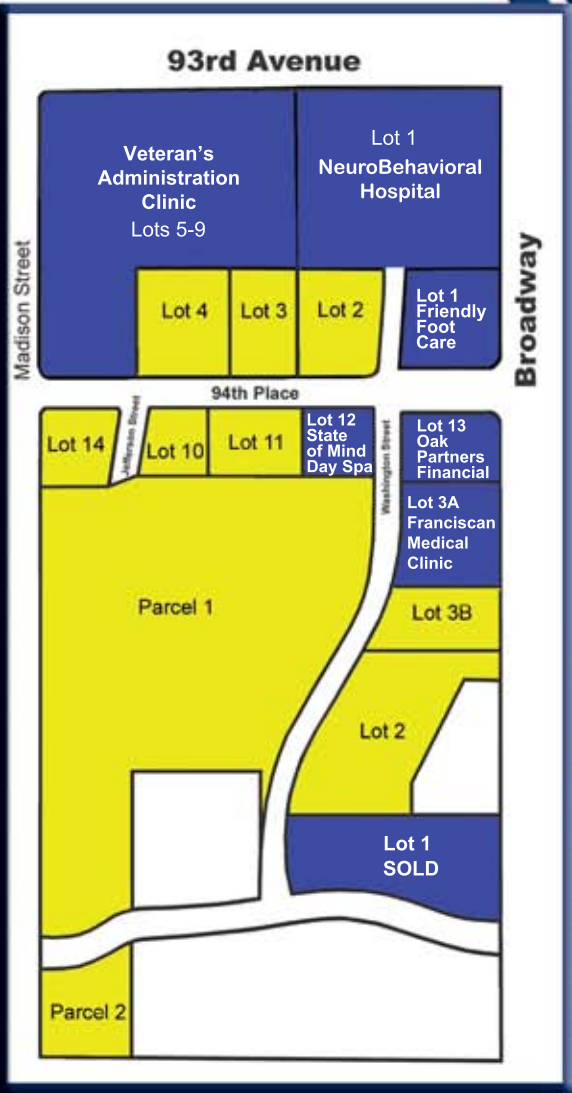
For sales or leasing information, contact:

John P. Fulkerson
Director of Leasing & Development
The Hamstra Group, Inc.
Office: 219/956-3111
Cellular: 219/ 863-8023
jfulkerson@hamstragroup.com

CROWNHURST CENTRE Commercial Building Sites



- * Outstanding building lots protected by Crownhurst Architectural & Site Development Code.
- * Currently Lots have been sold for Professional, Medical, Service and Financial uses.
- * General Business (B-3) and Professional (OS) Zoning available.
- * Crown Point Address with convenient direct access to both Crown Point and Merrillville.



PHASE I:			
Lot #	Acres	Feet ²	List Price
1	SOLD		
PHASE II:			
1	SOLD		
2	1.629	70,964	\$268,785.00
3	1.274	55,491	\$210,210.00
4	1.790	77,954	\$295,350.00
5	SOLD		
6	SOLD		
7	SOLD		
8	SOLD		
9	SOLD		
10	0.768	33,455	\$126,720.00
11	0.929	40,470	\$153,450.00
12	SOLD		
13	SOLD		
14	0.995	43,338	\$164,175.00
PHASE III: (Crownhurst Broadway Subdivision)			
1	SOLD		
2	5.00	217,977	\$1,500,000.00
3A	SOLD		
3B	1.29	56,195	\$387,000.00
PHASE IV:			
1	UNPLATTED		\$165,000
2	Proposed Retention Area		(per acre)

For sales or leasing information, contact:
John P. Fulkerson
Director of Leasing and Development

Office: 219/956-3111
Cellular: 219/863-8023
jfulkerson@hamstragroup.com



www.HamstraGroup.com